

Character:

- Only impulse excitation is needed, both for single and double coil .
- Small in size and PCB installation
- Low power consumption with great load capability.
- Dimensions: 29×12.8×25 (mm)

Contact parameter

Contact form	1B/1C	2B/2C
Contact resistance	Max.50.0mΩ(1A 6VDC)	
Contact material	Silver alloy	
Contact rating (resistive load)	16A 250VAC	5A 250VAC
Max. Switching Voltage	250VAC	
Max. Switching Current	16A	5A
Max. Switching Power	4KVA	12.5KVA
Life	Mechanical life	5×10 ⁵ OPS
	Electrical life	1×10 ⁴ OPS
Max. Short-circuit current	500A/10ms	

Performance parameter

Operate Time	15ms Max	
Release Time	15ms Max	
Relative humidity	45%-90%RH	
Dielectric strength	Coil&contact	2000VAC 50/60Hz(1Min)
	Between opencontacts	750VAC 50/60Hz(1Min)
Insulation resistance	100MΩ Min.(500VDC)	
Ambient temperature	-40°C~+70°C	
Impulsion	49m/s ²	
Vibration	10-55HZ, 1.5mm	
Weight	18g	

Coil parameter(20°C)

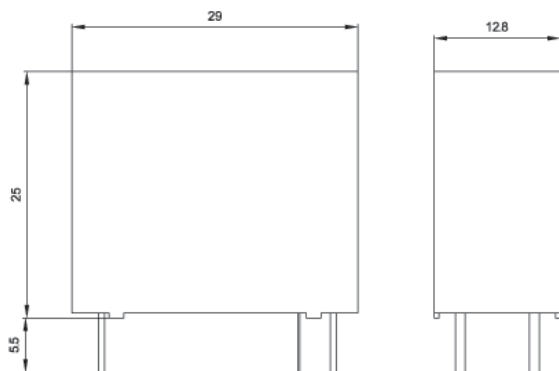
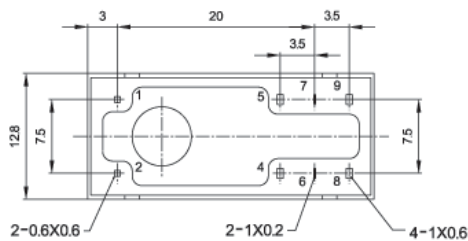
Rated coil (VDC)	Coil resistance(Ω)±10%		Coil power (W)		Operate voltage (VDC)	Release voltage (VDC)	Over voltage (VDC)	Impulse duration (ms)
	Single coil	Double coil	Single coil	Double coil				
5VDC	25	13/13	1.0W	2.0W	≤75%	≤75%	≤150%	≥50ms
6VDC	36	18/18						
9VDC	81	41/41						
12VDC	144	72/72						
24VDC	576	288/288						

Ordering information

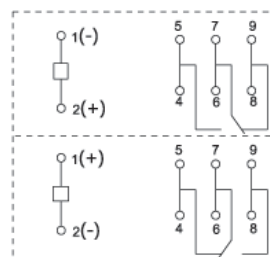
HRT516	5A	2C	12VDC	S		
					Coil type:	S:single coil D:double coil
					Coil voltage:	5,6,9,12,24V
					Contact form:	1B : a set of contacts remain closed 2B : two sets of contacts remain closed 1C : a set of contacts can be switched 2C : two sets of contacts can be switched
					Contact current :	5A,16A
					Type:	HRT516

Dimension 、 wiring diagram(unit:mm)

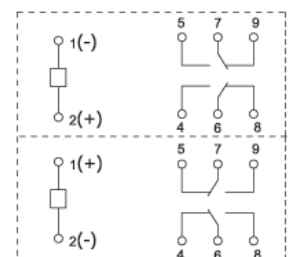
Single coil



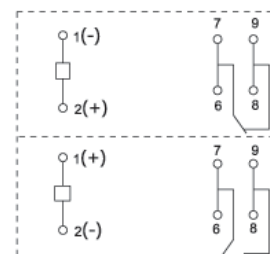
A set of contacts can be switched



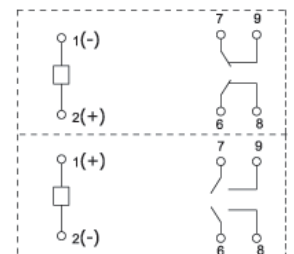
Two sets of contacts can be switched



A sets of contacts remain close.



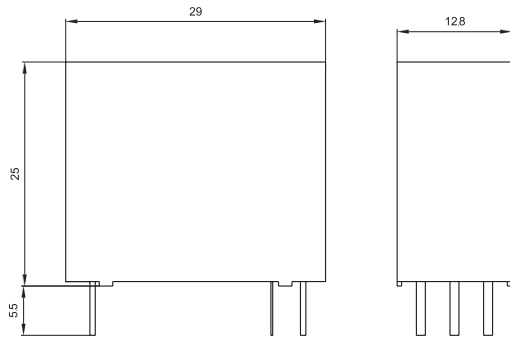
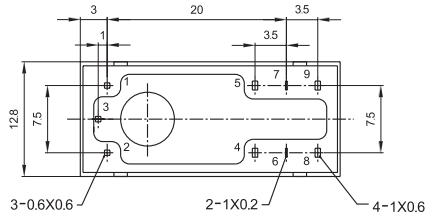
Two sets of contacts remain close.



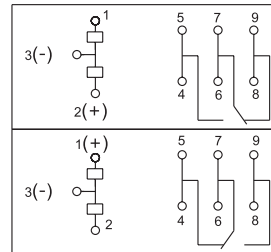
Note : No tolerance marked. When dimension is $\leq 1\text{mm}$, the tolerance shall be ± 0.2 ; when dimension is 1-5mm , the tolerance shall be ± 0.3 ; when dimension is $> 5\text{mm}$, the tolerance shall be ± 0.5 .

Dimension 、 wiring diagram(unit:mm)

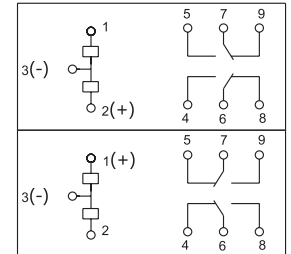
Double coil



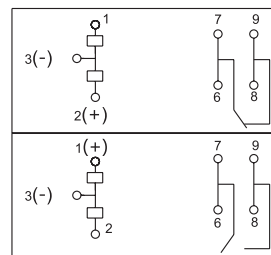
A set of contacts can be switched



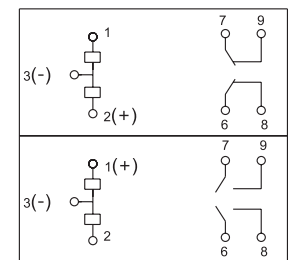
Two sets of contacts can be switched



A sets of contacts remain close.



Two sets of contacts remain close.



Typical application

- smart meter
- electric remote control
- leakage protection

Notice

- 1、 The factory default of the contacts is to stay closure (reset), It's possible that the status will be changed with impact during shipment or installation. Please make sure the status of the contacts stay reset before using.
- 2、 To guarantee the latching relay operates reliably, the excitation voltage to coil should meet the rated value and impulse duration needs to exceed 3 times of the operation time. For double coil type latching relay, please neither apply voltage signal to both coils at the same time nor apply with long time (over 1 min).
- 3、 Magnetic latching relay is polarized relay. If customer needs different kinds of polarity from the data sheet, please inform us.
- 4、 Please handle the latching relays with care during factory's incoming-inspection and when put in use, do not let the relay drops which will impact the parameter. Please make strict distinction between relay made for.